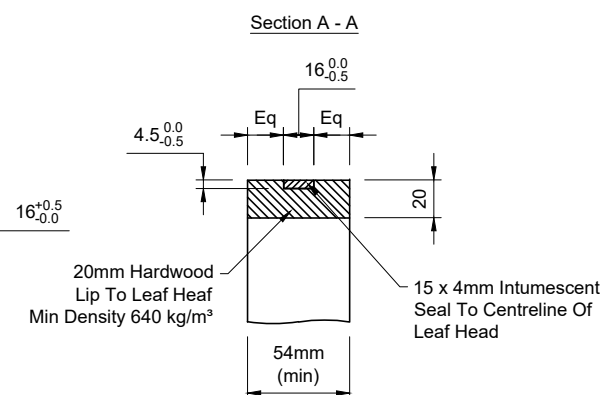
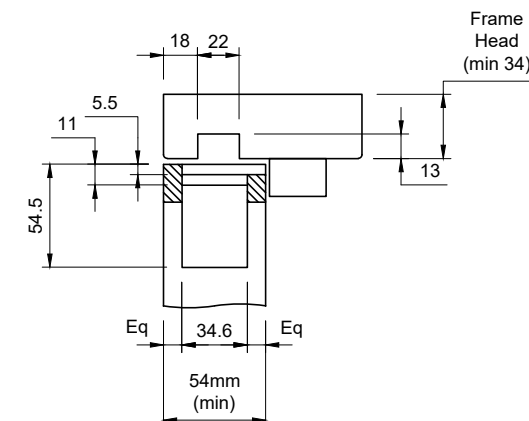
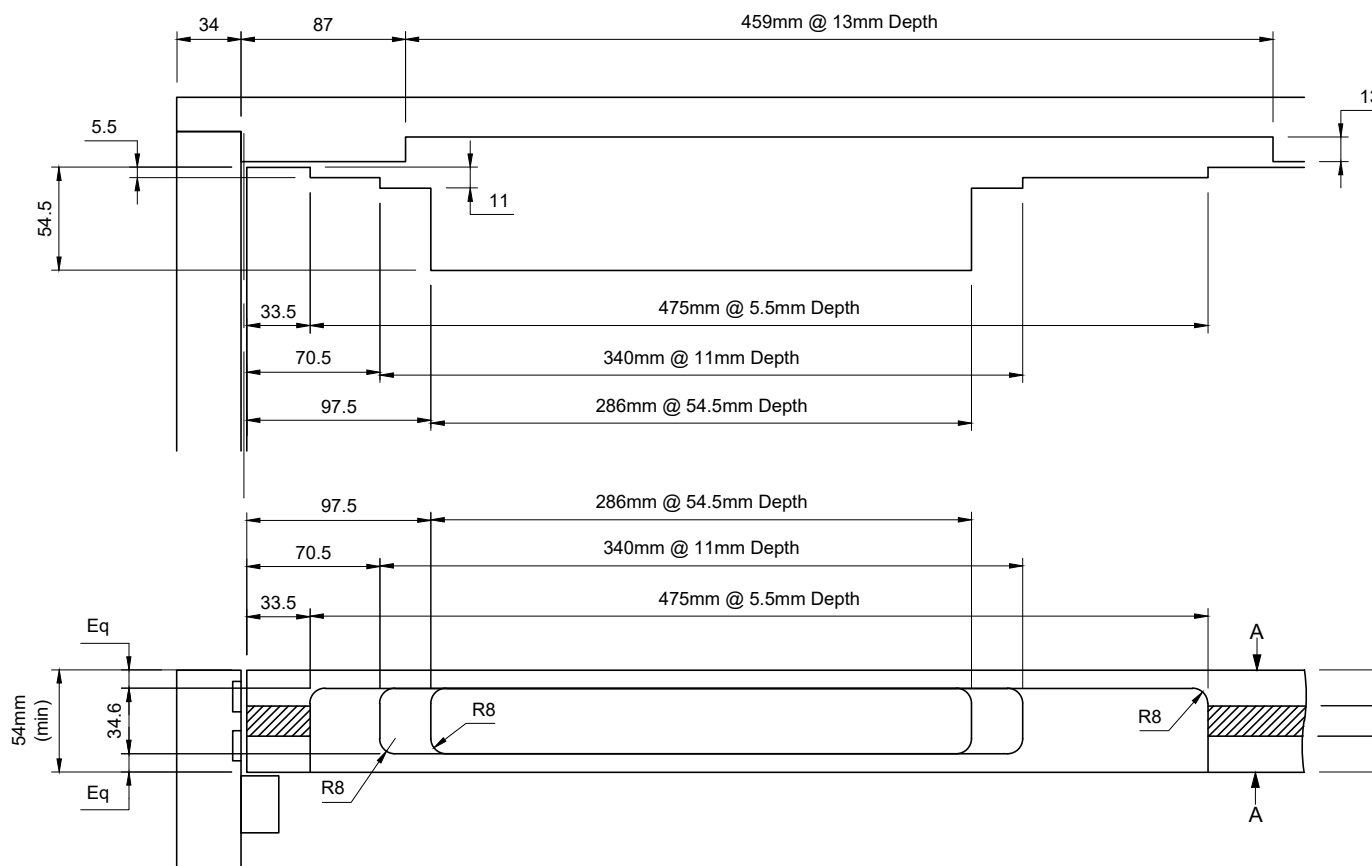
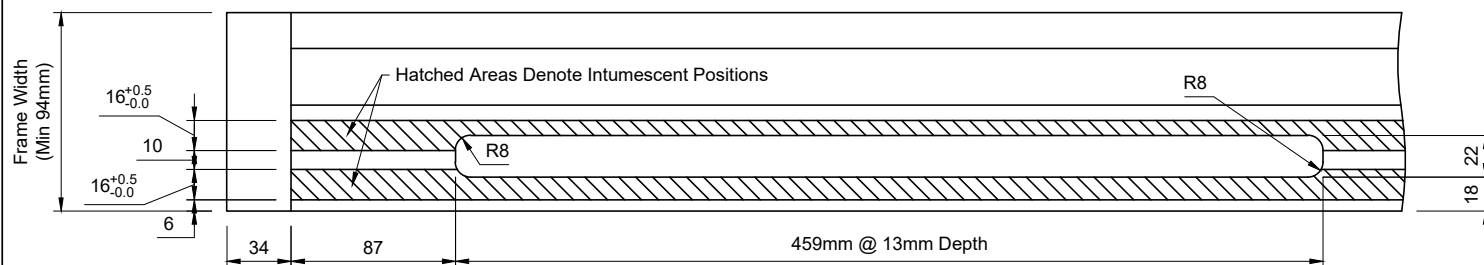


All Dimensions Are
In mm Unless Stated

Notes:

- 20mm Hardwood Lip Min Density 640kg/m³ To Leaf Head
- Fit 15 x 4mm Intumescent Seal To Centre Line Of Leaf Head Prior To Machining For Closer
- Use Manufacturer's Intumescent Kit Only
- All Rebates In Door & Frame Head To Be Fitted With Intumescent Material As Per Manufacturer's Instructions See CF 242
- Dimensions Include Allowances For Intumescent Material



Do Not Scale.

If In Doubt Ask!

Description: **Concealed Closer Machining - CF5229 - FD60 - Geze Boxer 2-4**

Drawn By: P. Brash	Approved: Approved	Revision: Rebates Amended For Intumescent Kit	Date: 30/06/2021	Drawing No:
Size: See Above	Tolerance: +/- 0.5mm		Fire Rating:	DP19557
Job No: N/A	© Doorpac Ltd		FD60S	Rev01